



Public Involvement Meeting

March 7, 2023 – Enterprise, AL

BUILD-0167(517)

Feasibility Study for Improving SR-167 from the Florida State Line to SR-192 (US-84 Bypass) in Enterprise and SR-52 from the Existing 4-Lane Section in Geneva to SR-167



*Southeast Alabama
Regional Planning
and Development
Commission*



SAIN
ASSOCIATES

BARGE
DESIGN SOLUTIONS®



We Need You!



S A I N
ASSOCIATES

STEPS:

1. Watch this slideshow (Station #1)
2. Walk through Stations #2 & #3 and view maps
3. Ask questions to understand the project
4. Complete the comment form

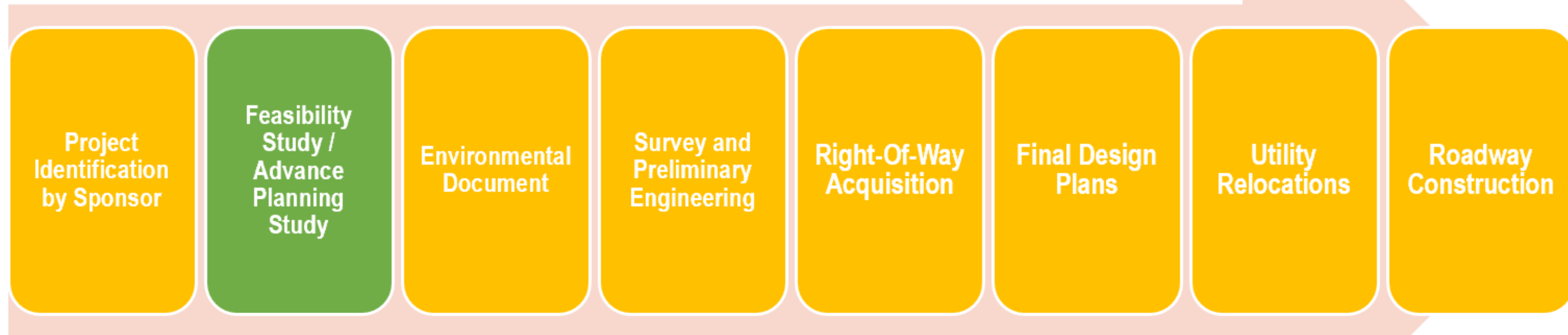
Your comments are valuable to the project. It is important to gain local knowledge and receive input on this information. Your input becomes a part of the project record and can influence project decisions.

No formal presentation will be given.



Project Development Process

We are Here



A project of this magnitude will require many years to complete.



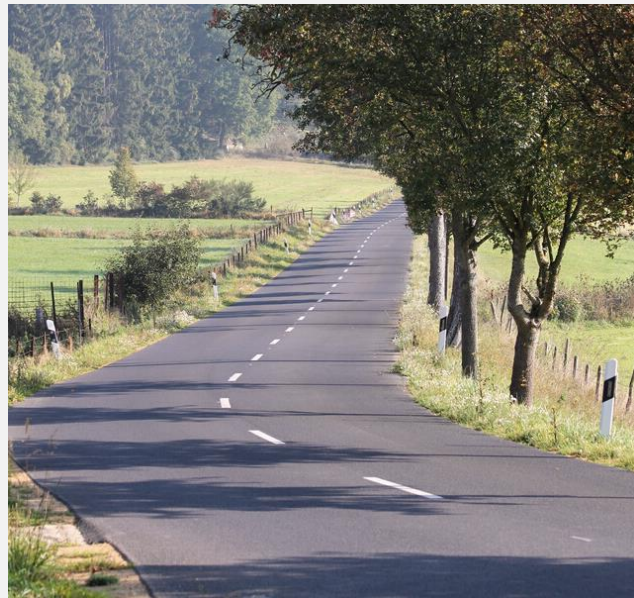
What is a Feasibility Study?

An evaluation of existing traffic operations and roadway conditions throughout a roadway corridor(s) and the development of potential improvement alternatives that address existing or anticipated needs. Even non-desirable alternatives need to be documented to demonstrate that they've been evaluated.





Identify what improvements are needed to improve mobility.



Determine if the improvements can be constructed feasibly.



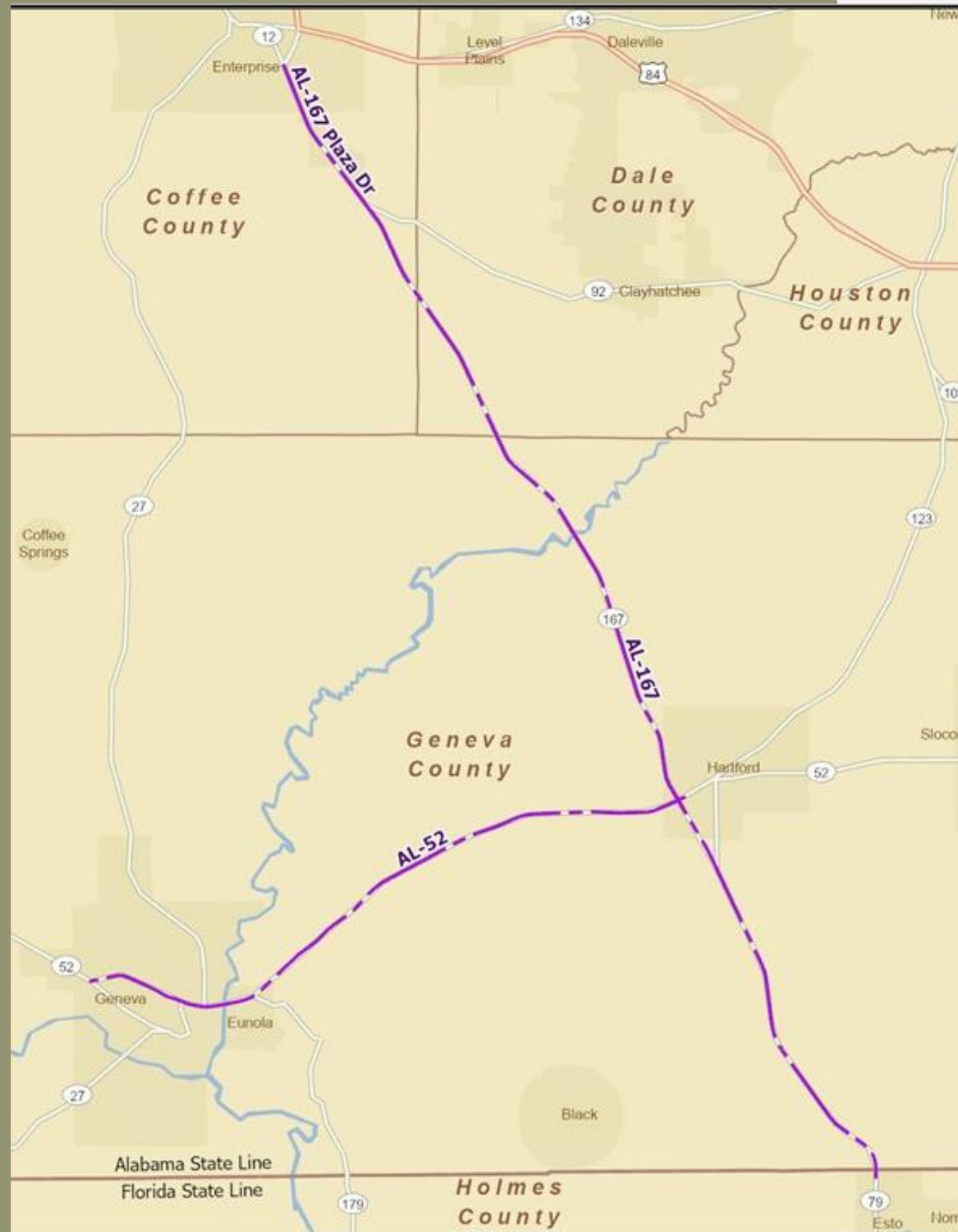
Explore available funding sources for improvements.

Goals of the Feasibility Study



Study Corridors

- State Route 167
 - Florida State Line to Boll Weevil Circle (US-84 Bypass/State Route 192) in Enterprise
- State Route 52
 - State Route 196 in Geneva to State Route 167 in Hartford



Purpose and Need

Goal: To substantiate the need and purpose of improvements with objective data.

The purpose and need for improving State Route 167 and State Route 52 will differ due to each route's *function* and *character*.

- North-South vs. East-West Orientation
- Rolling vs. Level Terrain
- Seasonal Traffic to/from the Florida Coast vs. Intercity Connection





Purpose and Need – State Route 167

- Catalyst for Economic Development (Industrial)
- Increase Mobility To and From I-10
- Increase Hurricane Evacuation Capacity and Disaster Resiliency
- Create Opportunities for Safer Passing of Slower Vehicles on Rolling Terrain





Purpose and Need – State Route 52

- Catalyst for Economic Development (Industrial)
- Expand Access to Basic Services in Rural Areas (Healthcare, Government)
- Create Opportunities for Safe Passing of Heavy Vehicles and Farm Equipment through an Agricultural Region
- Accommodate Growth from Houston County & Dothan to Provide More Reliable Travel Times for Commuters and Transit Agencies



Project Challenges

#1 – Long Timeframe for Large Project

#2 – Funding Has Yet to be Determined

#3 – Environmental Impacts Add Time & Cost



Takeaways

This project is still visionary. The purpose of this study is to determine whether it is a feasible project.

Improvement of these roadways would have significant regional impact:

- Economic Development, specifically industrial
- Growth of existing employers
- Additional roadway capacity to help facilitate emergency evacuation





*Southeast Alabama
Regional Planning
and Development
Commission*



S A I N
A S S O C I A T E S

BARGE
DESIGN SOLUTIONS®

**Your comments are valuable to the project.
We thank you for your time and input.**

